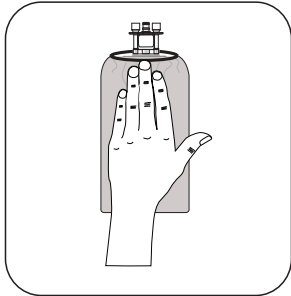
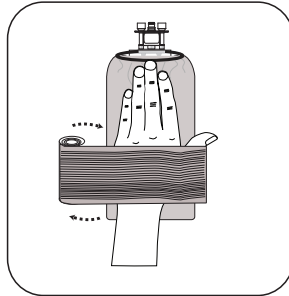


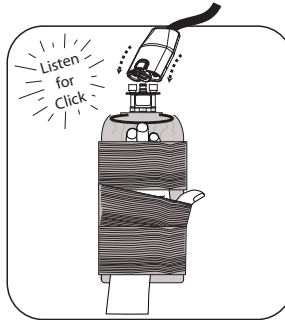
Hand Wrap Application (Coverlet)



Position the Hand Wrap with disposable Coverlet on your hand with the Logo side facing out. (Blue side against your skin)

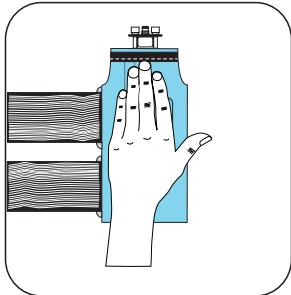


Next, wrap a bandage around both the Hand Wrap and your hand, securing the Hand Wrap to your hand. (Do not overtighten)

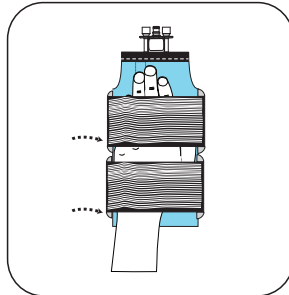


Next, connect the hose fitting to the Heat Exchanger fitting. (Fitting and connector fit together in one way only) Listen for an audible click for a secure fit.

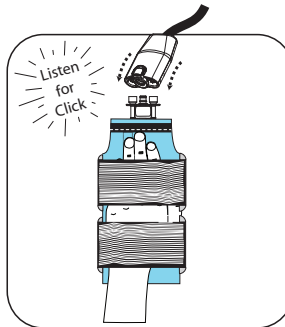
(Sleeve)



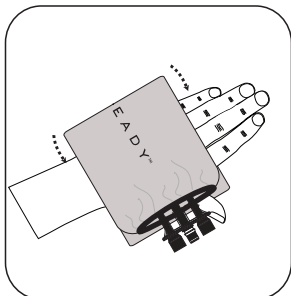
Detach the securing straps on one side of sleeve. Position the Hand Wrap with Sleeve on your hand with the Logo side facing out. (Blue side against your skin)



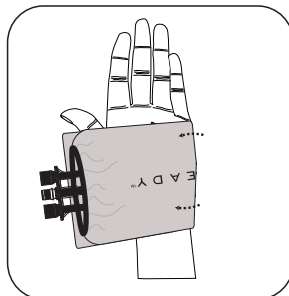
Next, stretch the securing straps around both the Hand Wrap and your hand and secure to your hand by applying the hook near the Logo. (Do not overtighten)



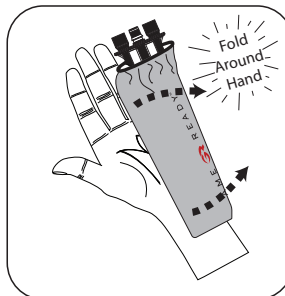
Next, connect the hose fitting to the Heat Exchanger fitting. (Fitting and connector fit together in one way only) Listen for an audible click for a secure fit.



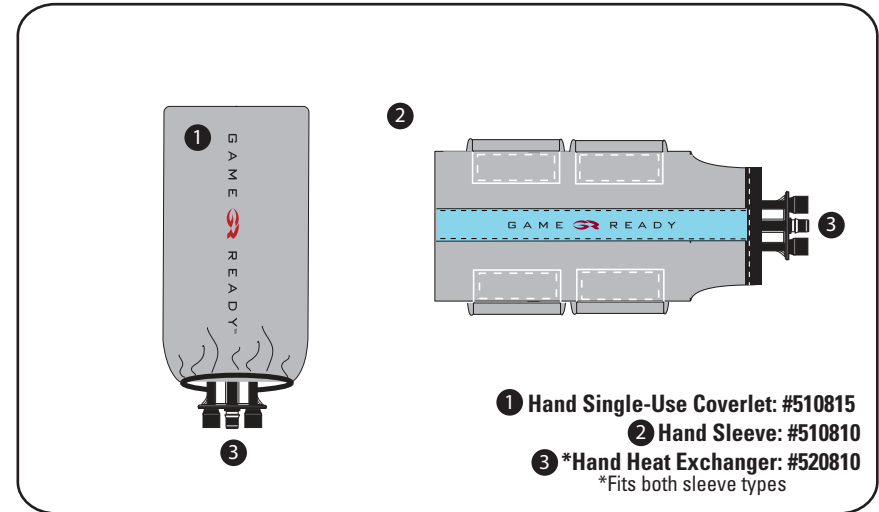
Note: You may position the Hand Wrap in many different positions on your hand, however be sure **NOT** to kink, twist or distort the Heat Exchanger as this may restrict water and air flow.



Note: When positioning the Hand Wrap over any area of your hand, ensure to keep the Heat Exchanger fitting accessible to connect the hose.



This versatile wrap can be positioned on your hand in many positions to deliver cold and compression therapy. (Illustration shows Hand Wrap folded over the outside ridge portion of hand)



- 1 Hand Single-Use Coverlet: #510815
- 2 Hand Sleeve: #510810
- 3 *Hand Heat Exchanger: #520810
*Fits both sleeve types

Warning: Always consult with your physician before using the Game Ready System for an injury.

Caution: Do not place directly against open wounds, sores, rashes, infections, or stitches. First place a sterile dressing on the wound and then apply the Wrap. If pressure is uncomfortable, pause unit, and restart with lower pressure. Do not store in closed plastic bag after use, as this will promote mold growth. Do not puncture Wrap, doing so will void Game Ready warranty.

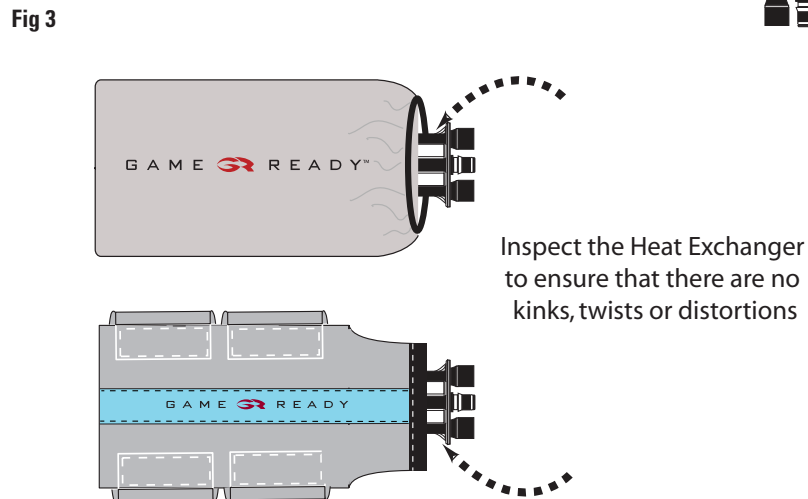
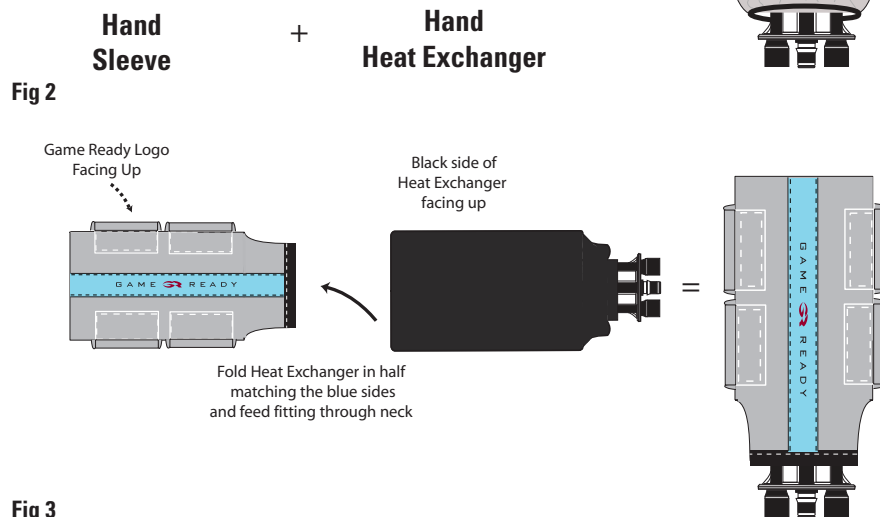
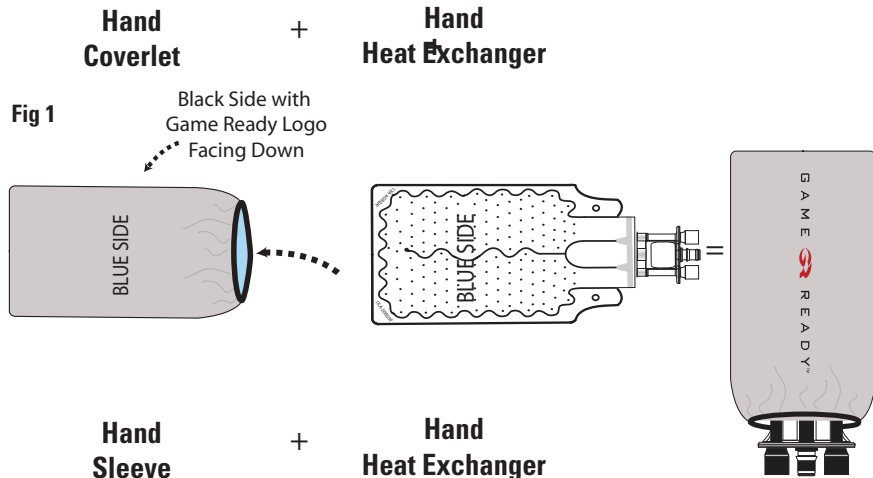
Care: Single-Use Coverlets are intended to be used once then discarded. Sleeve care; gently remove Heat Exchanger from the Sleeve. Hand or machine wash the sleeve in warm water and mild detergent, or antibacterial soap. Hang to dry. Hand wash the Heat Exchanger, do not machine wash. Periodically run hydrogen peroxide through your Game Ready System to keep the interior of your Wrap clean. See Control Unit User's Manual for more detail. Cold sterilization only.

Warranty Information:

Sleeve and Coverlet: In case of manufacturer defect, Sleeve or Coverlet may be returned within 7 days of purchase.

Heat Exchanger: 1 year from date of purchase. See warranty card included with Heat Exchanger.

Hand Wrap =



Hand Wrap - Heat Exchanger Insertion

Fig. 1 Place Hand Single-Use Coverlet on a flat surface with the logo side down. Insert Heat Exchanger into the Coverlet with blue side up through the elastic neck opening. (Blue side of Heat Exchanger should match blue side of Coverlet and Sleeve)

Fig. 2 Place Hand Sleeve on a flat surface with logo side up. Insert Heat Exchanger into the Sleeve through neck of sleeve with the black side facing up. (Blue side of Heat Exchanger should match blue side of Sleeve) Feed the connector fitting through the neck opening making sure Heat Exchanger lays flat inside sleeve.

Fig. 3 Make sure the Heat Exchanger is flat inside the Sleeve with no folds or creases. After assembly, lay the blue side up, make sure the wrap is flat and smooth.

Hand Wrap - Heat Exchanger Removal

Hand Wrap - Coverlet

- 1 Disconnect the Connector Hose from the Wrap
- 2 Gently pull out the Heat Exchanger

Hand Wrap - Sleeve

- 1 Disconnect the Connector Hose from the Wrap
- 2 Gently pull out the Heat Exchanger through the opening, while pulling the Heat Exchanger fitting back through the neck opening.